

DONNÉES TECHNIQUES MOTOREDUCTEURS MF-918D Series 25mm



WITH 2mm OUTPUT SHAFT (15:1 ONLY)



WITH 4mm OUTPUT SHAFT (ALL RATIOS)

RATIOS NOW AVAILABLE AS EX-STOCK ITEMS.

918D151	(1.5v - 3v) WITH RE 280 MOTOR (RATIO 15:1). 2mm SHAFT
918D151/1	(1.5v - 3v) WITH RE 280 MOTOR (RATIO 15:1). 4mm SHAFT
918D301/1	(1.5v - 3v) WITH RE 280 MOTOR (RATIO 30:1). 4mm SHAFT
918D1001/1	(1.5v - 3v) WITH RE 280 MOTOR (RATIO 100:1). 4mm SHAFT
918D2501/1	(1.5v - 3v) WITH RE 280 MOTOR (RATIO 250:1). 4mm SHAFT
918D3601/1	(1.5v - 3v) WITH RE280/3 MOTOR (RATIO 360:1). 4mm SHAFT
918D5001/1	(1.5v - 3v) WITH RE280 MOTOR (RATIO 500:1). 4mm SHAFT

918D15112	(12v - 24v) WITH RE 280/1 MOTOR (RATIO 15:1). 2mm SHAFT
918D15112/1	(12v - 24v) WITH RE 280/1 MOTOR (RATIO 15:1). 4mm SHAFT
918D30112/1	(12v - 24v) WITH RE 280/1 MOTOR (RATIO 30:1). 4mm SHAFT
918D100112/1	(12v - 24v) WITH RE 280/1 MOTOR (RATIO 100:1). 4mm SHAFT
918D250112/1	(12v - 24v) WITH RE280/1 MOTOR (RATIO 250:1). 4mm SHAFT
918D360112/1	(12v - 24v) WITH RE280/4 MOTOR (RATIO 360:1). 4mm SHAFT
918D500112/1	(12v - 24v) WITH RE280 MOTOR (RATIO 500:1). 4mm SHAFT
918D10241/1	(12v - 24v) WITH RE280/1 MOTOR (RATIO 1024:1). 4mm SHAFT

This miniature gearbox is of steel and brass construction with brass gears and is mounted on a 1mm thickness steel bracket. It incorporates a high quality three pole motor with sleeved bearings. The design and construction of the unit make it suitable for a host of model and light industrial applications.

MOTOR DATA. (RE-280 & RE-280/1)

MODEL	VOLTAGE		NO LOAD		AT MAXIMUM EFFICIENCY						STALL TORQUE	
	OPERATING RANGE	NOMINAL	SPEED	CURRENT	SPEED	CURRENT	TORQUE		OUTPUT	EFF	STALL TORQUE	
			R.P.M.	A	R.P.M.	A	oz - in	g - cm	W	%	oz - in	g - cm
RE - 280	1.5 - 3.0	1.5v CONSTANT	4600	0.120	3750	0.53	0.160	11.53	0.44	56.2	0.86	62.0
RE - 280	1.5 - 3.0	3.0v CONSTANT	9200	0.155	7800	0.85	0.278	20.00	1.60	62.3	1.81	130.0
RE - 280/1	12 - 24	12v CONSTANT	8400	0.10	6300	0.30	0.347	25.0	1.62	44.87	1.389	100
RE - 280/3	1.5 - 3	3v CONSTANT	8800	0.24	7200	1.06		23.2	1.71	53.8		126
RE - 280/4	12 - 24	12v CONSTANT	8224	0.046	6636	0.194		19.2		56.1		99.3

REDUCTION TABLE. R.P.M.

Stall Current RE280 at 1.5v = 2.41A

SUPPLY VOLTAGE	1.5v	3.0v	6v	12v	18v	24v
918D61	730	1409				
918D6112			476	1158	1974	2684
918D151	319	604				
918D15112			193	472	778	1086
918D301	159	296				
918D30112			96	238	405	543
918D1001	43	87				
918D100112			30	74	124	166
918D2501	18	34				
918D250112			12	29	50	67
918D3601	11	23				
918D360112			10	23	35	48
918D5001	8	15				
918D500112			7.5	16	25	33
918D10241	4.5	8.75				
918D1024112			2.8	7.25	12	16.75

WEIGHT	
918D61	75g
918D6112	75g
918D151	75g
918D15112	72g
918D301	75g
918D30112	75g
918D1001	77g
918D100112	77g
918D2501	78g
918D250112	78g
918D3601	87g
918D360112	87g
918D5001	g
918D500112	g
918D10241	89g
918D1024112	89g

GEARBOX RATINGS

RATED TORQUE (g.cm)	TOLERANCE	MAX. MOMENTARY TOLERANCE TORQUE
6:1	300	900
15:1	400	1200
30:1	600	1800
100:1	1000	3000
250:1	1200	3600
360:1	1200	3600
500:1	1200	3600
1024:1	1500	4500

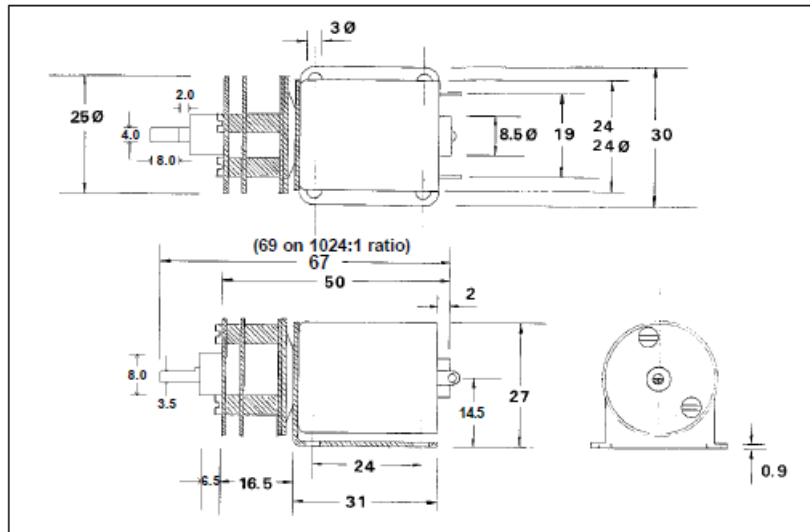
IMPORTANT NOTICE
Due to the wide range of applications for this product it is the users responsibility to establish the products suitability for their individual purpose(s).

Sté A4 – 5 avenue de l'Atlantique - 91940 Les Ulis

Tél. : 01 64 86 41 00 - Fax. : 01 64 46 31 19 www.a4.fr – email : techno@a4.fr

S.A.R.L. au capital de 100 000 € - RCS Evry B 388 336 000 - SIRET 388 336 000 00079 - APE 5811Z – N° intracommunautaire FR85388336000

GEARBOX DIMENSIONS.



Sté A4 – 5 avenue de l'Atlantique - 91940 Les Ulis

Tél. : 01 64 86 41 00 - Fax. : 01 64 46 31 19 www.a4.fr – email : techno@a4.fr

S.A.R.L. au capital de 100 000 € - RCS Evry B 388 336 000 - SIRET 388 336 000 00079 - APE 5811Z – N° intracommunautaire FR85388336000